

SPEED BY SPECTRE®

The 400mph Company™

Intake Installation Instructions

P/N 9939 (red filter) - P/N 9939B (blue filter)

P/N 9939K (black filter) - P/N 9939W (white filter)

Year/Make/Model/Engine

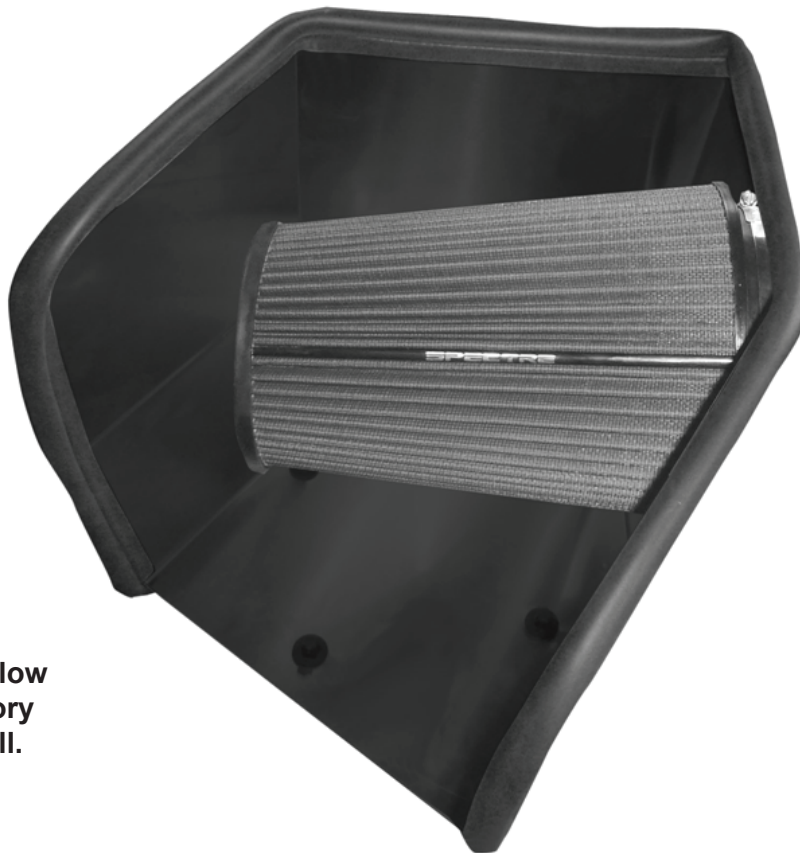
1994-2002 Dodge Ram 2500 3500 5.9L L6 Engines

Parts List

- 1- Heat shield
- 1- Rubber seal
- 1- Air filter
- 1- Velocity stack adapter

Tools Required:

- 5/16" or 8mm nut driver



This kit comes with a high flow lifetime hpR filter. It is factory pre-oiled and ready to install. For cleaning instructions, visit our website –

www.SpeedBySpectre.com

For filter reorders ask at the special order counter of your local parts store or call:

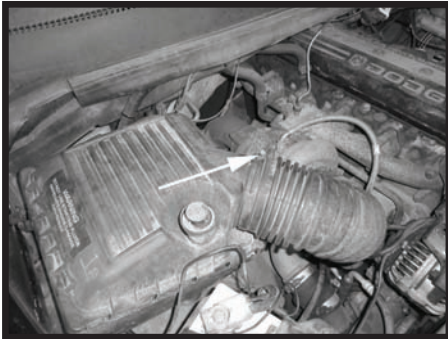
1-909-673-9800

ask for: P/N HPR0881 (red filter)
P/N HPR0881B (blue filter)
P/N HPR0881K (black filter)
P/N HPR0881W (white filter)

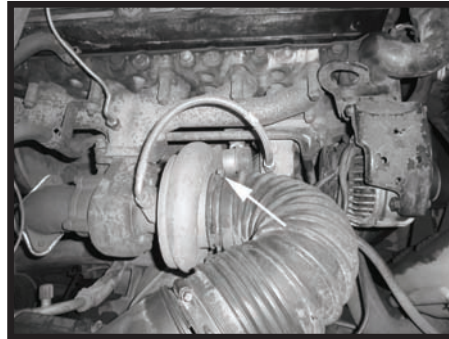
CARB Exempt-No Products that are not CARB exempt are legal in most states, but may not be used in California or states with similar emissions control laws.

Step 1

Safety first! Before you begin the installation, make sure that the vehicle is in park (or neutral for a manual transmission) with the parking brake set. Disconnect the negative battery terminal and verify that all components that are listed are present. Note: This kit was designed and tested on a stock engine without any custom tuning done to the engine computer. Removing the battery cable may erase the programmed radio stations. The anti-theft code will need to be entered into some radios after the battery cable is connected. The anti-theft code can typically be found in the owner's manual or at your local dealership.



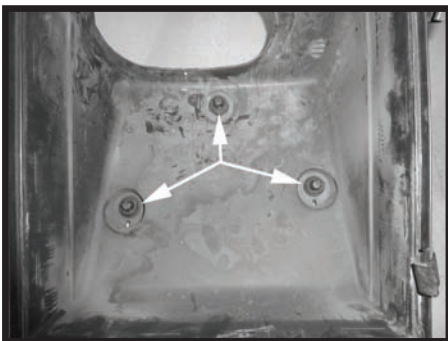
Step 2
Loosen the clamp on the factory tube to factory air box lid.



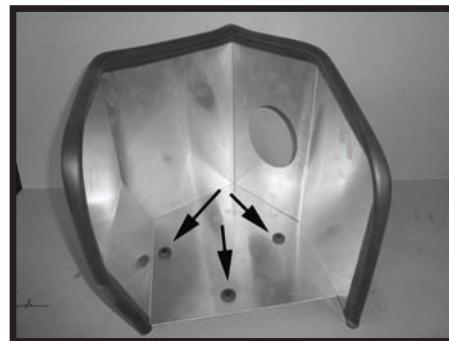
Step 3
Loosen the clamp on the factory tube to the turbo. Rotate tube up and out of the way.



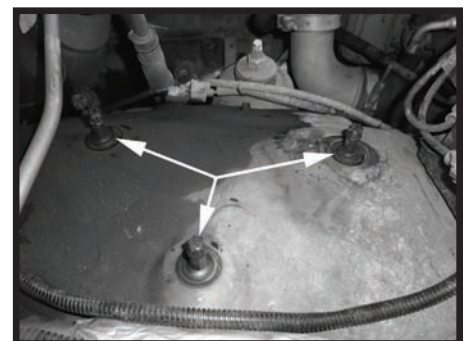
Step 4
Remove the air box from vehicle by pulling up and out firmly.



Step 5
Remove the factory air box locating pins and grommets from the air box.



Step 6
Install the bulb seal around the edges of the heat shield as shown. Also, install the factory grommets in the heat shield.



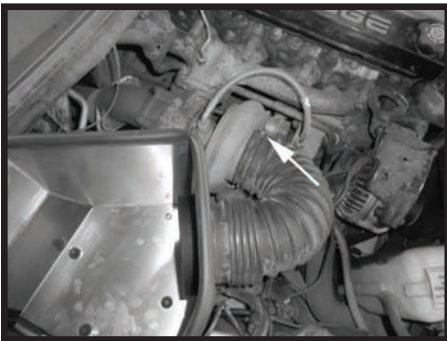
Step 7
Install the air box locating pins back in the vehicle making sure they are seated completely to the bottom of the studs.



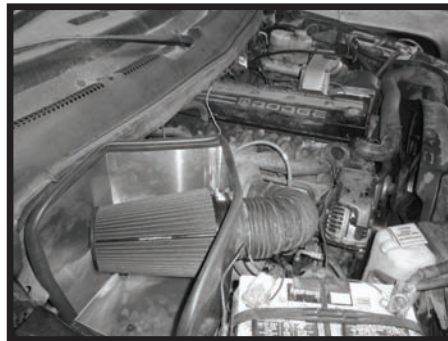
Step 8
Install the heat shield by centering the three grommets with the three locating pins. Once centered, push the heat shield down making sure the grommets are bottomed out on the pins.



Step 9
Place the velocity stack adapter in the heat shield and install the factory intake tube making sure the tube is pushed completely against the heat shield. Once the adapter and tube are tight against the heat shield, fully tighten the clamp.



Step 10
Fully tighten the clamp on the turbo side of the intake tube.



Step 11
Install the supplied air filter and clamp and tighten the clamp that secures the air filter.

Step 12
Reconnect the battery cable, start the vehicle and let it warm up. Shut off and inspect the installation once more for any loose clamps, wires, or hardware. Test drive & enjoy! Your installation is now complete. Periodically check all clamps and brackets.

If you have any difficulties or questions regarding the installation of this intake system, contact the Spectre Performance Technical Department by email - Tech@spectreperformance.com or by phone (909) 673-9800 Monday thru Thursday 6:00am to 4:30pm PST.

SPEED BY SPECTRE
The 400mph Company

(909) 673-9800
www.SpeedBySpectre.com